

Cheshire Children's Trust – Key messages and Progress

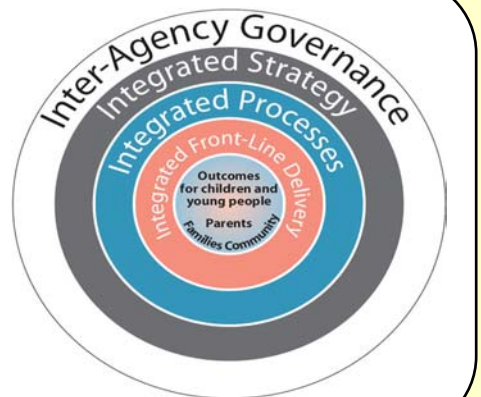
The Children Act 2004 - requires local authorities to establish Children's Trust arrangements by April 2008.

The purpose of a Trust - to provide the leadership that ensures effective arrangements are in place to deliver the best possible outcomes – recognition that no single agency can deliver change alone.

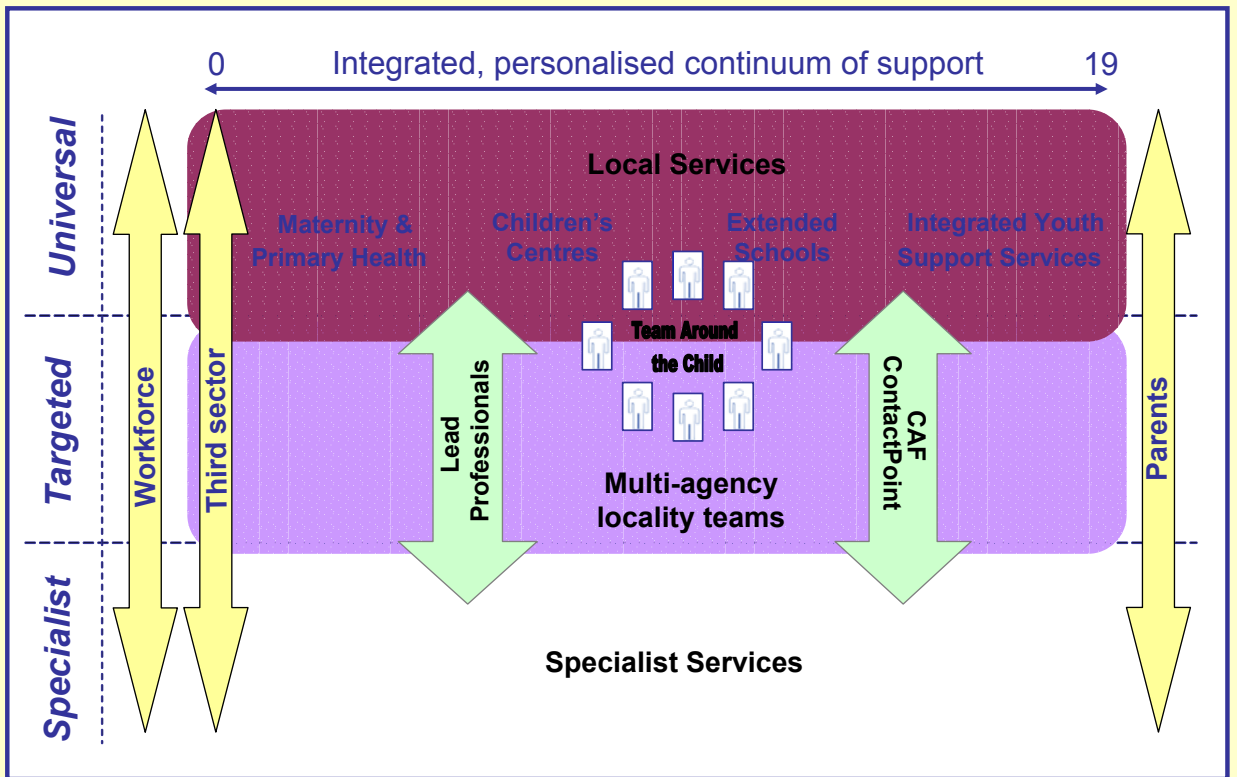
Manage better the £850m – invested in C&YP related services (identified via the Owl resource mapping)

Trusts are charged with delivering the 4 Outer rings to ensure the inner one happens -

Top tier Local authorities are responsible for leading the establishment of Trusts with local partners. The Director of Children's Services will be accountable for the operation of the children's trust, and the lead member for children will be politically accountable.



Cheshire Children's Trust – Delivering Change



Cheshire Children's Trust – What Difference?

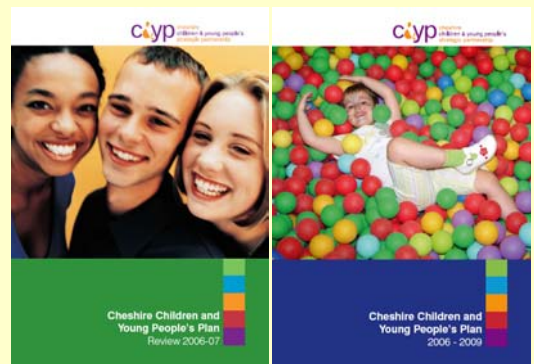
The Trust will not consider all priorities, for all children and young people, for all agencies all the time. It will focus on those priority improvements agreed by the Trust that are agreed as the most significant for improving outcomes.

Formalised Partnership Arrangements - It will not be a legal entity but will have an agreed governance framework including decision making processes, accountability and timetable – signed off and underwritten by member organisations.

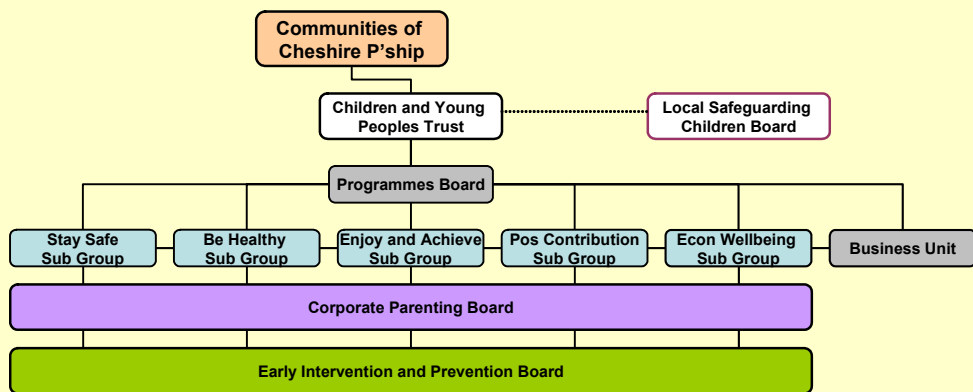
Joint Priority Setting and Collaborative Action – The C&YP Plan (inc LAA Children's Block) will set out 'joint' intentions.

Use a **Joint Commissioning Approach** - Analyse, Plan, Do, Review.

Be resourced to deliver - via a virtual Business Unit.



Cheshire Children's Trust – What will it look like?



Cheshire Children and Young People's Trust (*Leadership/Strategy*)

Programmes Board (*Leadership/Strategy*)

(5) Outcome Subgroups (*Operations*)

Business Unit (*Operations*)

Corporate Parenting Board (*Operations*)

Prevention and Early Intervention Board (*Operations*)

Cheshire Children's Trust – In Action?

The focus will be on priority improvements agreed by the Trust linked to delivering the core requirements

Integrated front line delivery

Lead the implementation of joint delivery models for example linked to early years provision in Children's Centres, Team around the Child, Disabled Children's Services under one arrangement.

Integrated processes

Joint working is improved through more common and connected systems. Inc national programmes, CAF and Contactpoint but also local improvements around referral and single points of access.

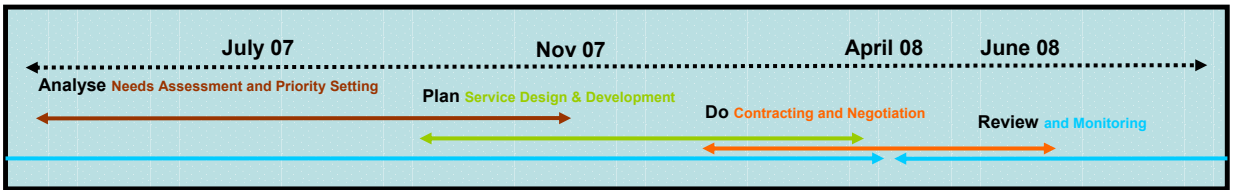
Integrated strategy (joint planning and commissioning)

Joint arrangements for the assessment of local needs and planning to prioritise areas for action – using joint commissioning approaches establish and review impact – align (eventually pool) budgets around the priorities agreed.

Inter-agency governance

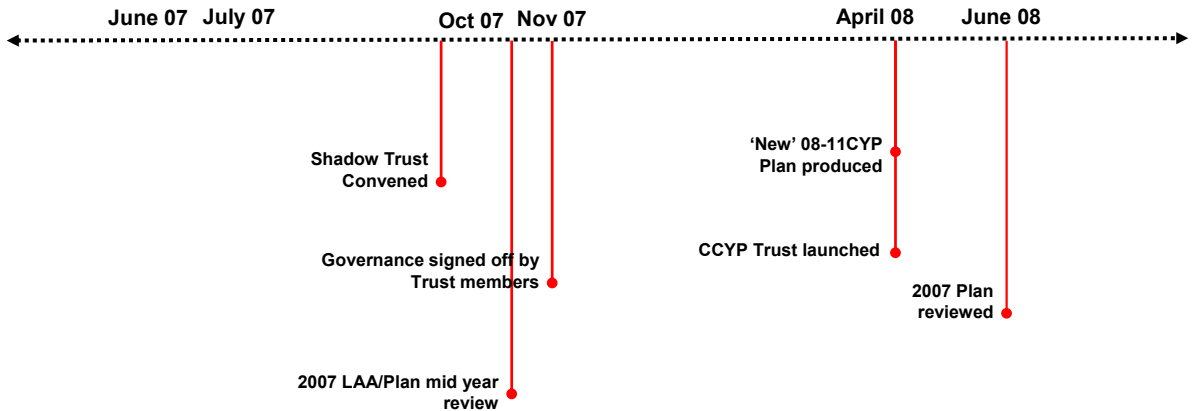
Trust becomes accountable for delivering the priorities and changes agreed and sets up joint reporting arrangements for agreed priorities.

Cheshire Children's Trust – Timing



2007

2008



Cheshire Children's Trust – Membership

The Trust shall be representative of all key delivery partners, service and sector leaders in Cheshire at a senior level to enable effective change programmes.

The County Council's Director of Children's Services
The Council's Executive Lead and Deputy Member for Children's Services (2 posts)
Six (one representative from each of the) City/District Councils
One representative from the Association Primary Head teachers
One representative from the Association Secondary Head teachers
One representative from the Association Special School Head teachers
One representative from the Fire Service
One representative from the C&YP Voluntary, Community and Faith Sector Hub
One representative from CCC Children's Social Care
One representative from CCC Inclusion and Education
One representative from CCC Children and Families
One representative from Cheshire Police
One representative from the Police Authority
One representative from the Learning and Skills Council
One representative from Connexions Cheshire and Warrington (IYSS)
Two representatives from Western Cheshire PCT (1 Board member and 1 Officer)
Two representatives from Central and Eastern Cheshire PCT (1 Board member and 1 Officer)
One Cheshire Director of Public Health
One Officer nominated by the Criminal Justice board